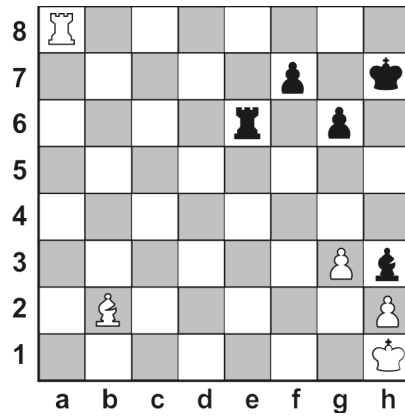


Zadania domowe (2):

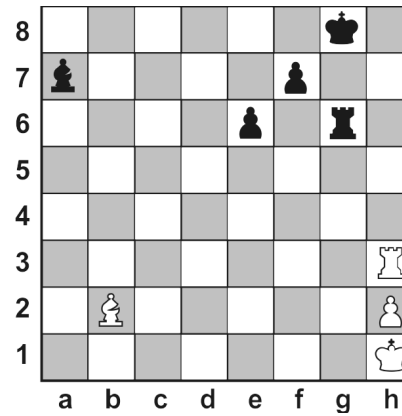
We wszystkich pozycjach zaczynają białe i dają mata w jednym posunięciu.

Zadanie 1



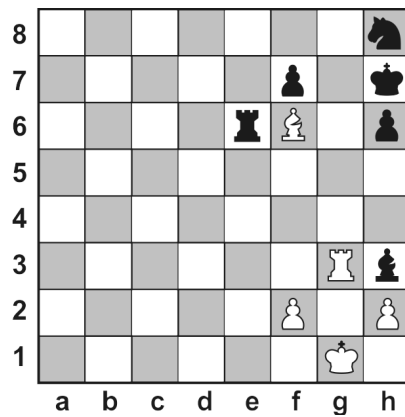
1.

Zadanie 2



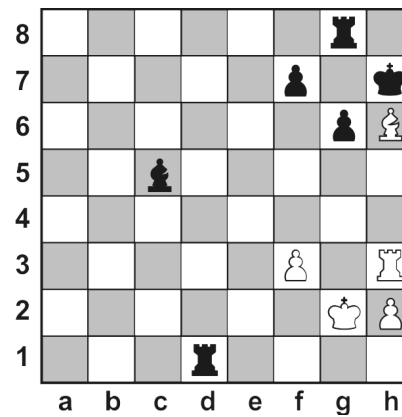
1.

Zadanie 3



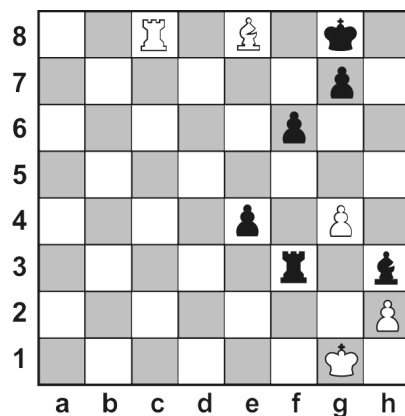
1.

Zadanie 4



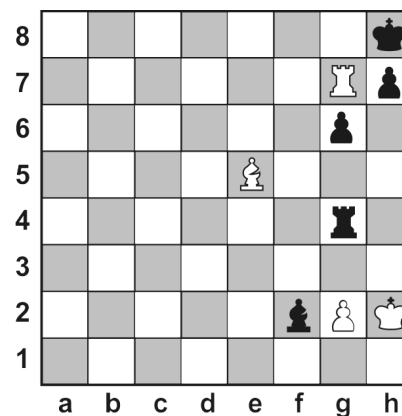
1.

Zadanie 5



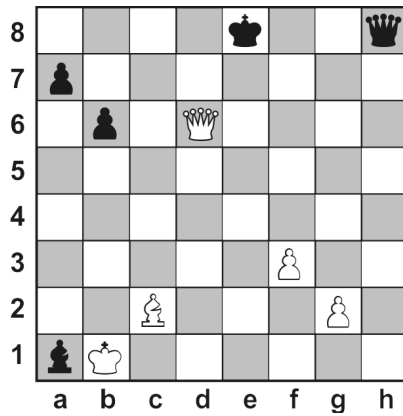
1.

Zadanie 6



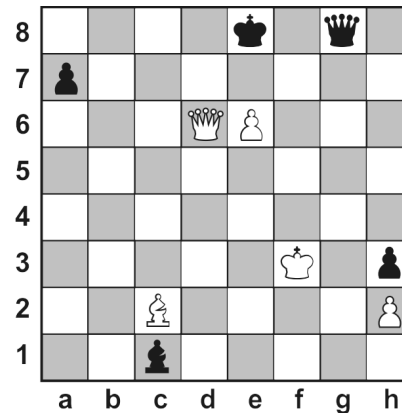
1.

Zadanie 7



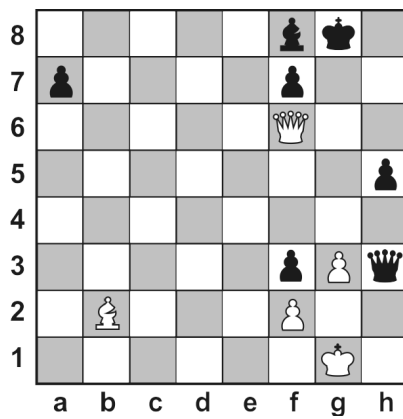
1.

Zadanie 8



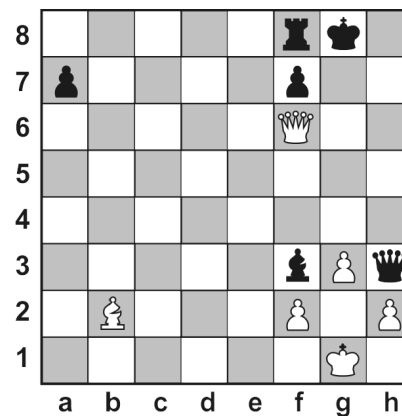
1.

Zadanie 9



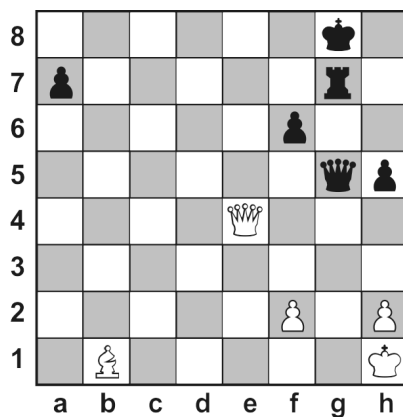
1.

Zadanie 10



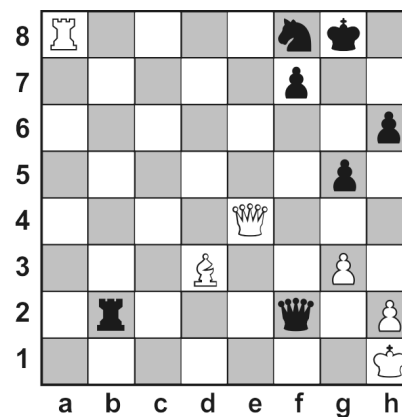
1.

Zadanie 11



1.

Zadanie 12



1.